

INSTALLATION GUIDE

Firmware Upgrade

Lg11059

Requirements:

- Ensure that the latest release of the LgCam software is installed on the computer. Visit the Lumenera website for the latest industrial camera software download
- Connect camera using the LuCam Capture software to confirm the version number, and to ensure that a connection to the camera is available and that the camera is operational
- Exit from the LuCam Capture software
- Login as an Administrator
- Establish a stable (and preferably direct) network connection between camera and host



A firmware update failure could result in the camera needing to be returned to Lumenera as an RMA, for reprogramming. Before proceeding, verify that the camera is correctly recognized and operational by launching the LuCam Capture software. Exit from LuCam Capture before proceeding with the firmware upgrade.

STEP 1

Extract Firmware:

Extract the firmware updater provided by Lumenera.

STEP 2

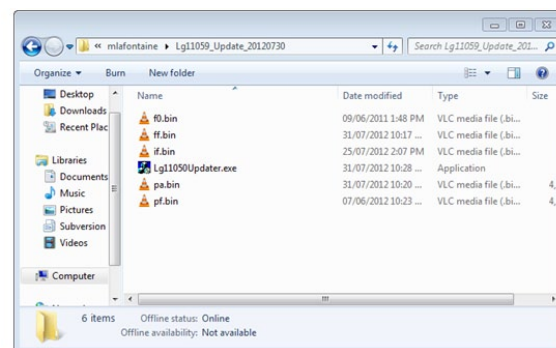
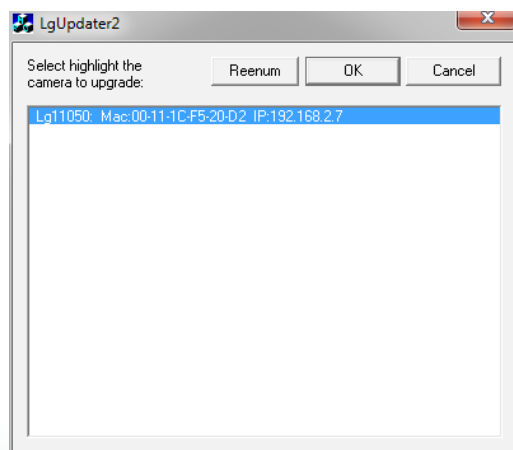
Locate Folder:

Navigate to folder where the archive has been extracted and double click the Lg11050Updater.exe **OK** button is enabled. Click **OK** to proceed.

STEP 3

Begin Update:

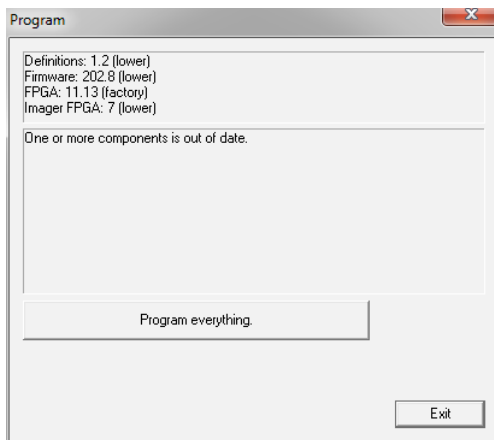
Click the **Reenum** button, then select the camera that you wish to update. When these 2 actions are done the



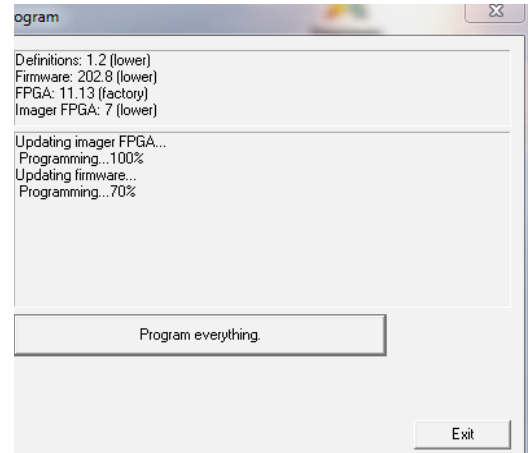
STEP 4**Update Firmware:**

The program will show a new dialog box titled "Program". It will automatically interrogate the camera and show if the camera needs to be updated with new firmware. To program the camera press the **Program everything** button.

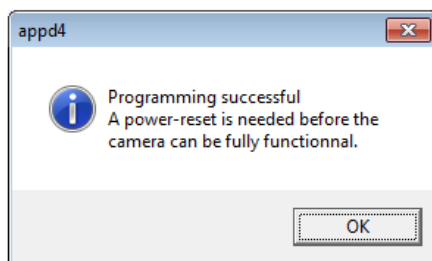
Note: This operation should be done in a local environment to avoid any communication problem.

**STEP 5****Programming Camera:**

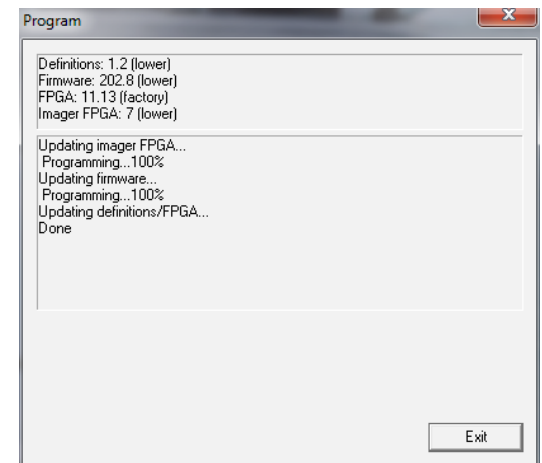
The operation will program the camera with each individual section and show you the progress of each section. Once these steps are complete, an updating window will appear, this is where the camera memory gets erased and reprogrammed with new software.

**STEP 6****Run New Firmware:**

When the re-programming operation is complete, a dialog box is displayed prompting you to power cycle the camera in order for the new firmware to run. Press the **OK** button to continue.

**STEP 7****Update Complete:**

To conclude with the Firmware updater application, Press the **Exit** button.





7 CAPELLA COURT, OTTAWA, ON, CANADA K2E 8A7 | TEL (613) 736-4077 | FAX (613) 736-4071 | WWW.LUMENERA.COM | INFO@LUMENERA.COM

© 2013 Lumenera Corporation. All rights reserved.

Design, features, and specifications are subject to change without notice.

04222013