

Lumenera and Opticare Work Together to Diagnose Ophthalmic Diseases

Opticare Aims to be the Premier Distributor of Ophthalmic Instruments in South America

Argentinean-based Opticare has been providing technology to diagnose and treat ophthalmic diseases for over 35 years.

Established in 1976 by its President Pedro Faulhaber, Opticare has grown to be recognized as South America's premier distributor of Ophthalmic Instruments including: Topcon Ophthalmic Instrumentation, Excimer Lasers, and Fundus cameras used for photographing the interior of the eye.

Lumenera Provides USB 2.0 Cameras for Disease Diagnoses

A key component to top Ophthalmic equipment is the imaging component inside the instrument. In order to properly diagnose critical eye diseases the camera must produce precise pictures of the retina. Opticare chose Lumenera's high megapixel USB 2.0 cameras to integrate into their innovative products. Their fundus camera-based systems leverage Lumenera's Lw165 and Lw235 color and monochrome cameras with high sensitivity to acquire retinal color fundus, fluorescein eye stain, ICG, and auto fluorescence images.

Lumenera and Opticare Meet the Highly Sensitive Needs of Ophthalmic Care

Over the past five years, Lumenera has developed a strong partnership with Opticare. By selecting Lumenera's OEM products Opticare benefits from outstanding picture quality, alternate form-factors, unique mechanicals and affordable prices. Additionally, Lumenera's engineering team complimented Opticare's expertise in the ophthalmic market, making it possible to integrate the cameras best suited to diagnostic requirements and ensuring all eye health safety parameters were met.



Opticare's Topcon 3D OCT-2000 System with Fundus Camera

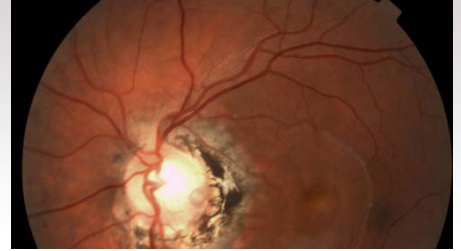
Highlights

- Opticare provides technology to diagnose and treat ophthalmic diseases in South America.
- Opticare chose Lumenera's high megapixel USB 2.0 cameras to integrate into their innovative products.
- Lumenera's Lw165 and Lw235 cameras acquire retinal color fundus, fluorescein eye stain, ICG, and auto fluorescence images.
- Lumenera's engineering team complimented Opticare's expertise, making it possible to integrate the cameras best suited to diagnostic requirements ensuring all eye health safety parameters are met.



“As a company, Lumenera strives to provide world class OEM imaging products and integration services,” stated Larry Whelan, Director of Scientific Business Development, Lumenera Corporation. *“Partnering with Opticare allows us to gain a better understanding of the markets requirements, and offers us the opportunity to help them grow their business through timely development at competitive pricing.”*

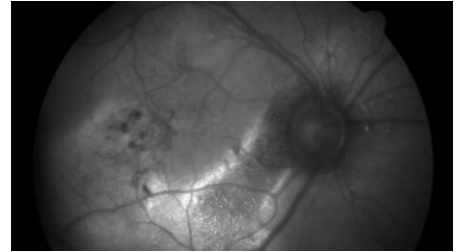
Opticare’s strengths include a highly trained sales team and professional service engineers. It has leveraged its experience in ophthalmic hardware, digital imaging and software suites to integrate turn-key systems which include Lumenera megapixel cameras for clear and precise retina samples.



Retina color fundus captured with TOPCON retinal camera using AngioImage digital imaging system and Lumenera’s Lw235C



Retina fluorescein angiography captured with TOPCON retinal camera using AngioImage digital imaging system and Lumenera’s Lw235C



Retina Autofluorescence captured with TOPCON retinal camera using AngioImage digital imaging system and Lumenera’s Lw165M

About Lumenera

Lumenera Corporation, a division of Roper Technologies, headquartered in Ottawa, Canada, is a leading developer and manufacturer of high performance digital cameras and custom imaging solutions. Lumenera cameras are used worldwide in a diverse range of industrial, scientific and security applications.

Lumenera solutions provide unique combinations of speed, resolution and sensitivity in order to satisfy the most demanding digital imaging requirements. Lumenera customers achieve the benefit of superior price to performance ratios and faster time to market with the company’s commitment to high quality, cost effective product solutions.

For further information about Lumenera, please visit www.lumenera.com or call 613-736-4077.

