

Dermatopathology Lab Chooses Lumenera Cameras for Speed and Clarity in Microscopy

New Private Dermatopathology Clinic Provides Personal Care

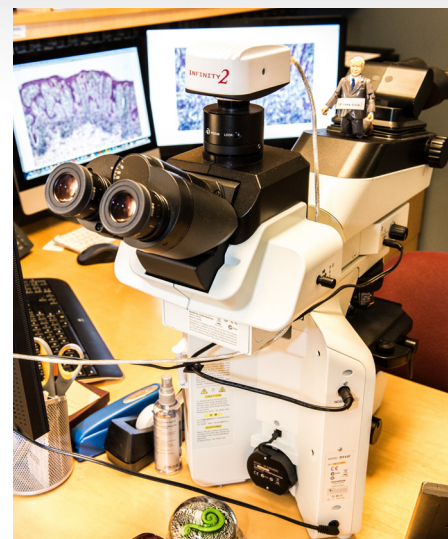
Ball Dermpath is a new, physician-owned dermatopathology practice in Greensboro, NC. Their team of experienced doctors, technologists, and case managers, provides world-class, state-of-the-art diagnostic services. Busy practice administrators, nurses and physicians appreciate their innovative, highly personalized, and easy to use reporting platform.

Head pathologist and clinic owner, Dr. Russell A. Ball, MD has over 23 years of experience in the field. Dr. Ball is also heavily involved in shaping the future of dermatopathology in his position as a part-time instructor at Duke University Medical Center.

High Volume Practice Requires Ease of Use and Clarity in Imaging

As a discipline, dermatopathology is heavily reliant on microscopy photographs and the new clinic needed a high quality camera that would be easy to use, fast and Macintosh compatible. Dr. Ball and his team anticipated a high volume of samples and rapid workflow requiring the images to be clear and quick to analyze. It was important to have the ability to send microscopy images directly to the Macintosh computers for instant viewing. It was also imperative that a camera provide exceptional clarity of color as most pathology samples are stained, usually with challenging H&E Stains including pinks and purples.

Lumenera's INFINITY2-5 CCD camera offers excellent sensitivity, high resolution and a wide dynamic range for brightfield, darkfield and DIC imaging applications. The camera was up and running within ten minutes



Highlights

- INFINITY2-5 camera offers excellent sensitivity, high resolution and a wide dynamic range, producing real time video in addition to still images.
- Camera is fully compatible with Macintosh systems and can be utilized easily in a pathology or teaching environment.
- INFINITY2-5 USB 2.0 camera interfaces easily with any C-mount microscope with images or video projecting to a monitor.
- Images are bright and clear allowing for rapid analysis and diagnosis.



and the vast majority of images have not required any editing at all. The ImageJ application allowed for easy editing and viewing on the Mac system. The camera interfaced easily with the microscope and the images did not experience any field cuts.

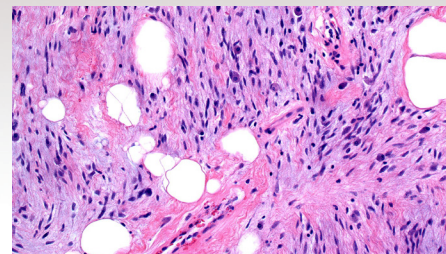
INFINITY2-5 Offers Versatility in Image Use and Presentation

Ball Dermopath is a teaching clinic and will be hosting pathology residency students from Duke University among others. Typically students must view samples directly through a microscope lens which is cumbersome and time consuming but the INFINITY2-5 is able to project images and live video feeds directly to a monitor in the lab or classroom. The quality is so high that no resolution is lost. This versatility of viewing is ideally suited for a private practice where pathologists and residents work closely with clients to diagnose dermatological ailments. In the university classroom setting Dr. Ball captures images directly from teaching samples and provides them for student reference at a later date.

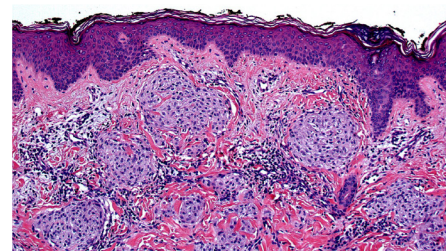
As an author and researcher, Dr. Ball utilizes the high quality 5 megapixel images in dermatopathology textbooks and journal articles, providing key visuals of the samples around which the research has been based. The INFINITY2-5 camera's images are easily reproducible in printed format. Lumenera's INFINITY2-5 camera is ideally suited for both clinical and teaching settings and has provided Ball Dermopath with fast, clear and reliable microscopy on an easy-to-use Mac platform – exactly what the new, fast-paced clinic required.

“ I've been a pathologist for 26 years, taking microscopic photos on various film and digital cameras, and this INFINITY2-5 camera is by far the easiest and most effective camera that I've used thus far. Additionally, at this resolution, the images are excellent at all magnifications. The basic software interface is very user-friendly, and I was up and running in 10 minutes after opening the box. ”

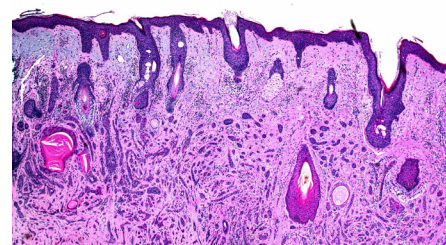
Dr. Russell Ball, MD
Ball Dermopath



Spindle Cell Lipoma 200x



Cellular Neurothekeoma 100x



Microcystic Adnexal Carcinoma 40x

About Lumenera

Lumenera Corporation, a division of Roper Technologies, headquartered in Ottawa, Canada, is a leading developer and manufacturer of high performance digital cameras and custom imaging solutions. Lumenera cameras are used worldwide in a diverse range of industrial, scientific and security applications.

Lumenera solutions provide unique combinations of speed, resolution and sensitivity in order to satisfy the most demanding digital imaging requirements. Lumenera customers achieve the benefit of superior price to performance ratios and faster time to market with the company's commitment to high quality, cost effective product solutions.

For further information about Lumenera, please visit www.lumenera.com or call 613-736-4077.

