

Lumenera LabVIEW Plug-in Installation GUIDE

You have just downloaded the Lumenera Plug-in and ready to perform installation. Please read these instructions in their entirety before proceeding and then follow the steps below for a quick and easy installation.

Required Tools and Parts:

Operating system:

- Windows XP (SP3), Windows Vista or Windows 7
- 32-bit & 64-bit operating systems are supported
- The computer should also have as a minimum Microsoft .Net Framework 3.5

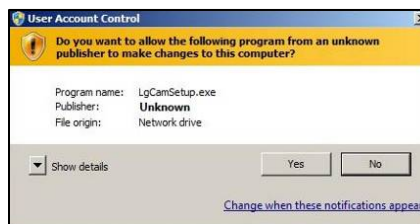
Pre-requisites:



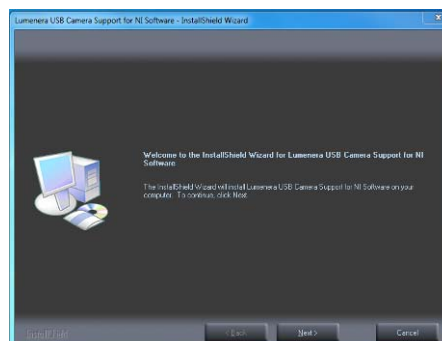
- Latest Infinity camera software or LuCam Software installed prior this installation.
- National Instruments LabVIEW already installed (supported versions listed):
 - LabVIEW 7.1 (32 bits).
 - LabVIEW 8.0 (32 bits).
 - LabVIEW 8.2 (32 bits).
 - LabVIEW 8.5 (32 bits).
 - LabVIEW 8.6 (32 bits).
 - LabVIEW 2009 (32/64 bits).
 - LabVIEW 2010 (32/64 bits).
 - Vision Builder AI 3.0 (32 bits).
 - Vision Builder AI 3.5 (32 bits).

Installation:

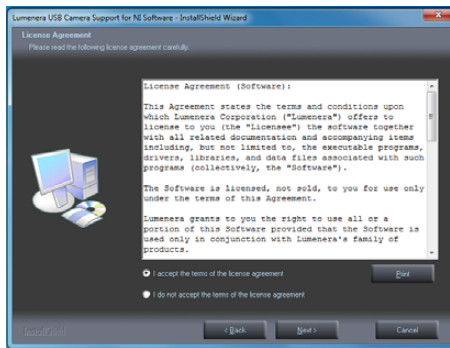
1. You must ensure you are logged into the computer with administrator privileges prior to continuing the installation.
2. Close all application software that is running.
3. Double-click on the installation program.
4. Follow the onscreen prompts to install the software drivers and user application. The installation script steps are the same whether the installation takes place on a Windows XP, Windows VISTA, or Windows 7 platform, and either 32-bit or 64-bit.



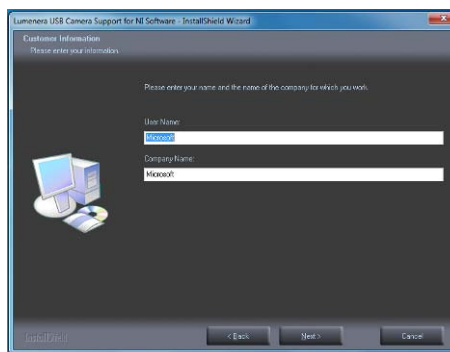
5. On a Windows VISTA or Windows7 computer, you may see the warning shown above, if the UAC (User Access Control) is enabled. Respond by clicking the button labeled as **Yes**.



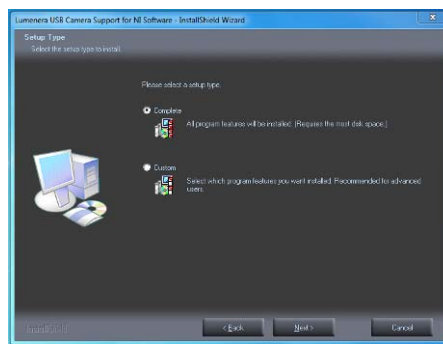
- Once the installation setup has completed, click Next to continue with the installation



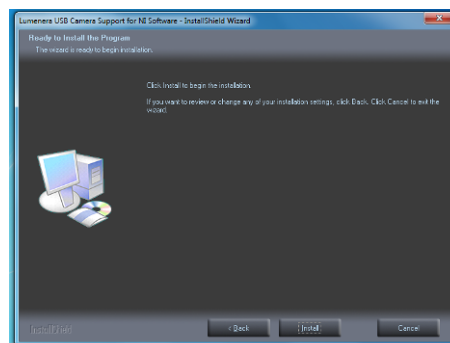
- Select the option to accept the license and click Next to continue.



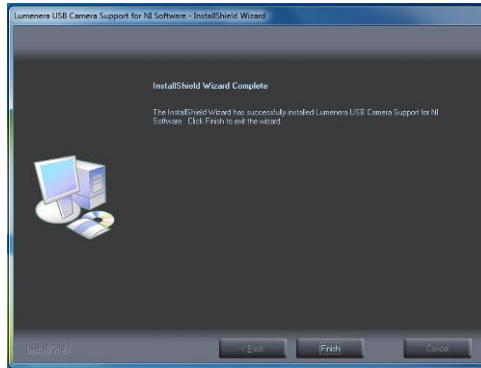
- Complete User Name and Company Name fields and click Next



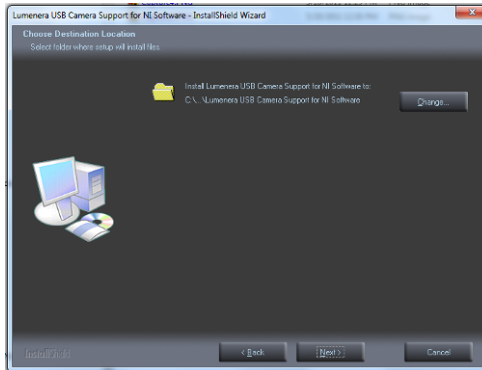
- Choose the option for the Complete install to install all software's version or custom installation to select desired version. If Custom is selected, jump to step #12 on page 3.



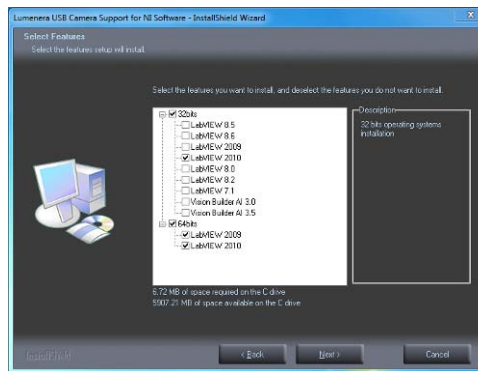
- Click next to proceed with installation.



- Click Finish to end the installation and you are ready to use the Lumenera product with LabVIEW. If LabVIEW was not installed prior to running this process, it will be necessary to move the directory manually. This requires moving the instr.lib directory (including files and subdirectory) to the custom location that matches the LabVIEW location "c:\Program Files\ National Instruments\LabVIEW XXX\



- Click **Next** to proceed with the installation.



- Select the desired software package and click Next to proceed. Return to Step #0 on page 2 to continue instruction steps.

License Agreement (Software)

This Agreement states the terms and conditions upon which Lumenera Corporation ("Lumenera") offers to license to you (the "Licensee") the software together with all related documentation and accompanying items including, but not limited to, the executable programs, drivers, libraries, and data files associated with such programs (collectively, the "Software").

The Software is licensed, not sold, to you for use only under the terms of this Agreement.

Lumenera grants to you the right to use all or a portion of this Software provided that the Software is used only in conjunction with Lumenera's family of products.

In using the Software you agree not to:

- a. decompile, disassemble, reverse engineer, or otherwise attempt to derive the source code for any Product (except to the extent applicable laws specifically prohibit such restriction);
- b. remove or obscure any trademark or copyright notices.

Limited Warranty (Hardware and Software)

ANY USE OF THE SOFTWARE OR HARDWARE IS AT YOUR OWN RISK. THE SOFTWARE IS PROVIDED FOR USE ONLY WITH LUMENERA'S HARDWARE AND RELATED SOFTWARE. THE SOFTWARE IS PROVIDED FOR USE "AS IS" WITHOUT WARRANTY OF ANY KIND. TO THE MAXIMUM EXTENT PERMITTED BY LAW, LUMENERA DISCLAIMS ALL WARRANTIES OF ANY KIND, EITHER EXPRESS OR IMPLIED, INCLUDING, WITHOUT LIMITATION, IMPLIED WARRANTIES OR CONDITIONS OF MERCHANTABILITY, QUALITY AND FITNESS FOR A PARTICULAR PURPOSE. LUMENERA IS NOT OBLIGATED TO PROVIDE ANY UPDATES OR UPGRADES TO THE SOFTWARE OR ANY RELATED HARDWARE.

Limited Liability (Hardware and Software)

In no event shall Lumenera or its Licensor's be liable for any damages whatsoever (including, without limitation, incidental, direct, indirect, special or consequential damages, damages for loss of business profits, business interruption, loss of business information, or other pecuniary loss) arising out of the use or inability to use this Software or related Hardware, including, but not limited to, any of Lumenera's family of products.

Please refer to Lumenera's Warranty online at <http://www.lumenera.com/about.php>.

Product Warranty

Lumenera Corporation warrants to the original purchaser that our cameras are guaranteed to be free from manufacturing defects for a period of one (1) year from the original date of purchase.

Should the unit fail during the warranty period, Lumenera will, at its option, repair or replace the failed unit. Repaired or replaced units will be covered under warranty for the remainder of the original one (1) year warranty period.

This warranty does not apply to units that, after being inspected by Lumenera, have been found to have failed due to customer abuse, accidents, mishandling, tampering/alteration, improper installation, improper power source, negligence, opening of the enclosure, or if the serial number has been removed or damaged. This warranty does not cover labor or incurred charges required in removing or installing the unit, any business interruption, loss of profits/revenues, or any consequential damages.

Units returned to Lumenera beyond the warranty period will be repaired, if possible, and all appropriate material and labor charges will apply.

Any returning product, specifically those being returned under warranty, must follow the Returned Material Authorization (RMA) process. Any units being returned are to be properly packaged (in original packing - if possible). Lumenera will not cover damage sustained in shipping due to improper packing.

For RMA instructions please refer to our website at www.lumenera.com.